

PRELIMINARY ISSUE
THIS PLAN ISSUED FOR
ADVANCE INFORMATION ONLY

NAD 83
CENTERLINE ANGLE POINTS
HUMBOLDT BAY
(BAR & ENTRANCE)

PT	X	Y
C-1	5936273.49	2172157.43
C-2	5938147.59	2171508.43
C-3	5940265.09	2170773.43
C-4	5943553.39	2166602.43
C-5	5945455.29	2166122.43
C-6	5945376.39	2165957.23
C-7	5946085.69	2166728.23
C-8	5946886.99	2167508.33
C-9	5947166.09	2168359.43
C-10	5948049.99	2169917.43
C-11	5949433.89	2170455.43
C-12	5949233.79	2171119.43
C-13	5950417.39	2171891.43
C-14	5951329.29	2172556.43
C-15	5952138.39	2173530.43
C-16	5952999.89	2174706.43
C-17	5953711.89	2180611.43
C-18	5956236.79	2183159.43
C-19	5957823.09	2186979.43
C-20	5958152.59	2187513.43
C-21	5958681.79	2187878.43
C-22	5959281.79	2188078.43
C-23	5959581.79	2189078.43

NAD 83
CHANNEL ANGLE POINTS
HUMBOLDT BAY (BAR & ENTRANCE)

PT	X	Y	PT	X	Y
1	5936596.69	2173163.63	24	5959081.79	2187578.43
2	5938385.39	2172268.83	25	5958421.69	2187381.23
3	5940404.09	2171259.93	26	5958007.99	2186903.83
4	5943666.09	2169944.43	27	5956426.99	2183993.63
5	5944727.49	2166468.93	28	5956165.59	2181942.63
6	5945239.99	2166690.33	29	5956346.69	2181424.83
7	5945752.59	2166911.73	30	5956566.99	2180383.43
8	5946464.09	2167311.33	31	5956165.09	2174904.63
9	5946853.59	2168479.53	32	5956200.39	2173413.53
10	5947631.69	2170042.13	33	5956156.79	2172459.53
11	5948193.09	2170679.33	34	5956252.69	2171724.13
12	5949124.59	2171287.03	35	5949434.09	2170952.03
13	5950308.09	2172059.13	36	5948674.79	2170232.13
14	5951141.79	2172853.23	37	5948301.49	2169794.33
15	5951976.39	2173546.23	38	5947398.59	2169242.23
16	5952816.79	2174808.43	39	5946907.49	2167381.23
17	5953484.79	2180520.43	40	5946431.39	2166537.23
18	5954047.79	2183225.33	41	5945672.89	2165192.43
19	5954738.19	2187055.43	42	5945354.09	2162524.63
20	5955788.59	2187647.53	43	5944363.09	2162776.33
21	5956881.79	2188978.43	44	5943444.39	2162611.63
22	5958081.79	2189078.43	45	5943121.19	2172287.83
23	5959681.79	2188378.43	46	5937908.79	2170746.43
			47	5936950.29	2171151.43

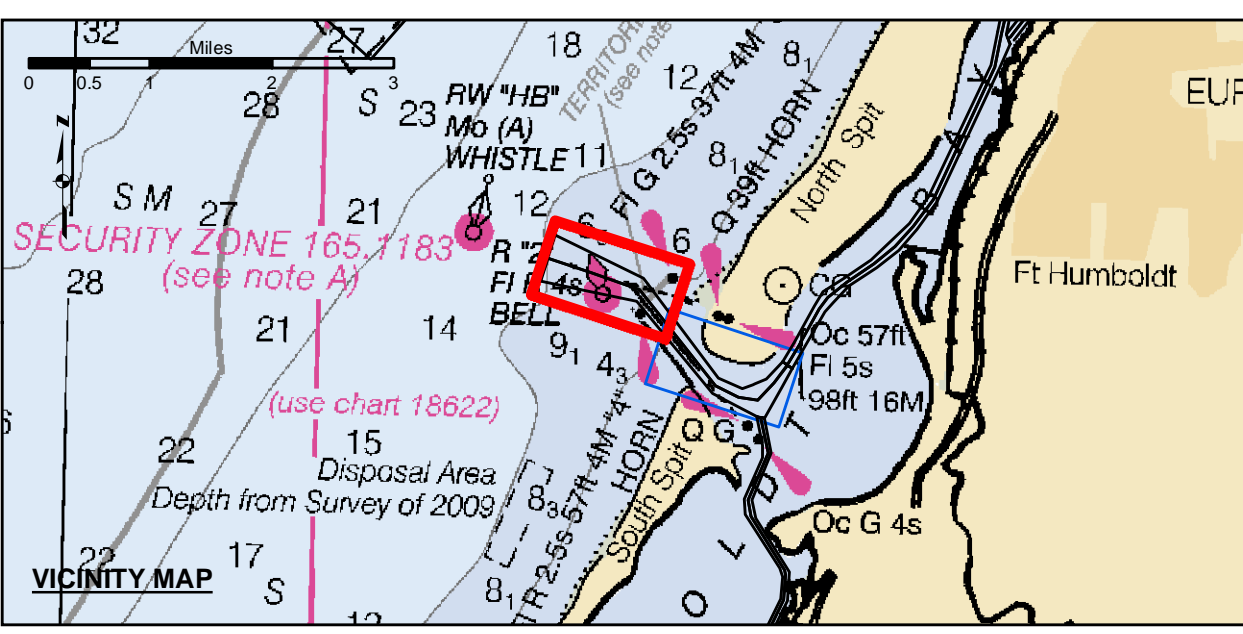
US Army Corps of Engineers
San Francisco District
450 Golden Gate Ave
San Francisco, CA 94102

DISCLAIMER
The United States Government furnishes this information as a service to the public. It is not intended to be used for any purpose other than that for which it was prepared. The United States Government makes no warranty, expressed or implied, concerning the accuracy, completeness, or reliability of the information. The user assumes all liability for any use of the information. The user agrees to hold the United States Government harmless from any and all claims, damages, or liabilities, including reasonable attorneys' fees, arising from the use of the information. The user further agrees to indemnify and hold the United States Government harmless from any and all claims, damages, or liabilities, including reasonable attorneys' fees, arising from the use of the information. The user further agrees to hold the United States Government harmless from any and all claims, damages, or liabilities, including reasonable attorneys' fees, arising from the use of the information.

PREPARED UNDER THE DIRECTION OF
JOHN D. CUNNINGHAM
LT COLONEL, C.E. DISTRICT ENGINEER

Surveyed By:	Plotted By:	Checked By:	Approved:
John D. Cunningham	PDT	PDT	Chief, Construction Branch
Chart Date:	Designed by:	Drawn by:	
Feb 17, 2021	PDT	PDT	

HUMBOLDT COUNTY CALIFORNIA
**HUMBOLDT BAY
BAR & ENTRANCE CHANNEL
CONDITION SURVEY**
29 JANUARY 2021
7-9 FEBRUARY 2021

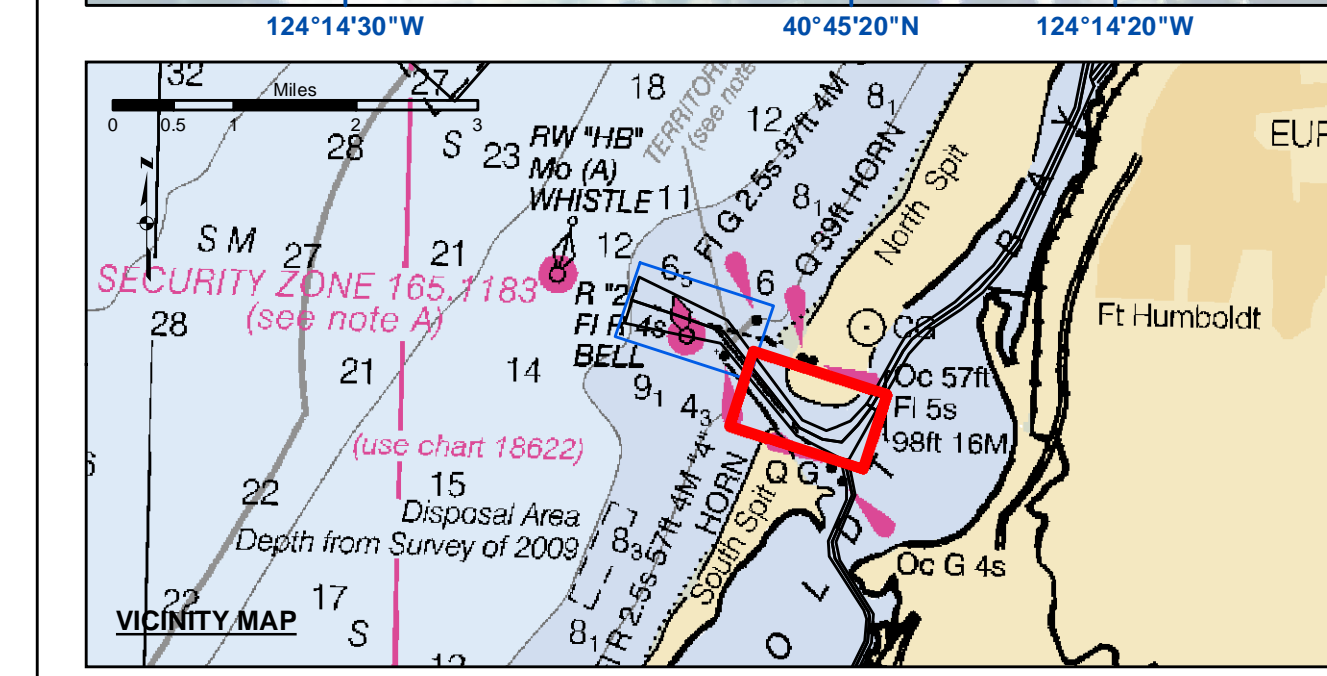
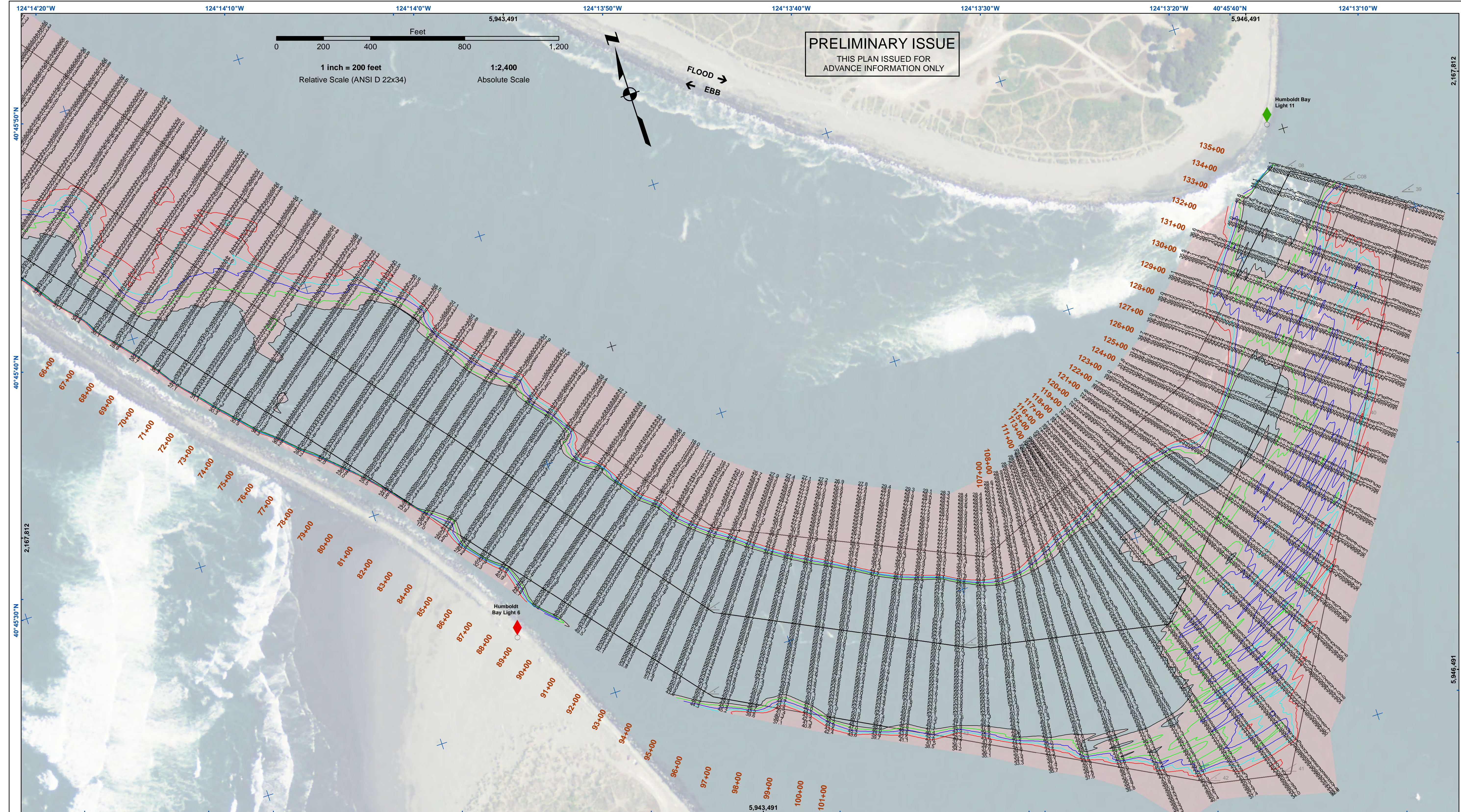


- Federal Navigation Channel
- Shoaling Area
- Placement Area
- Anchorage Area
- Wreck Area
- Submerged Wreck
- Zone_I_Angle_Points
- Beacon, General
- Obstruction Point
- Navigation Buoy
- Navigation Buoy
- Shoalest Sounding*
- Contours -48
- Contours -47
- Contours -46
- Contours -45
- Contours -44

NOTES:
DRAWINGS NOT TO BE USED AS NAVIGATION. ONLY CHANNEL CONDITION AT DATE OF SURVEY. THE LOCATION OF ALL NAVIGATION AIDS ARE BASED ON INFORMATION PROVIDED BY THE U.S. COAST GUARD. BUOY LOCATION REPRESENT THE POSITION OF THE SINKER ONLY.
SURVEYED BY THE CORPS OF ENGINEERS.
SOUNDINGS WERE TAKEN BY FATHOMETER AND ARE SHOWN TO THE NEAREST TENTHS OF A FOOT.
SOUNDINGS ARE BASED ON THE DATUM OF MEAN LOWER LOW WATER AT THE LOCALITY.
PLANE GRID AND COORDINATES ARE BASED ON THE STATE OF CALIFORNIA COORDINATE SYSTEM, LAMBERT CONFORMAL PROJECTION, ZONE 11 NAD 83, CALIFORNIA, AS DESCRIBED IN SPECIAL PUBLICATION NO. 235, PUBLISHED BY THE NATIONAL OCEAN SURVEY.
PROJECT DEPTHS ARE AS FOLLOWS:
BAR & ENTRANCE CHANNEL = 48 FEET
NORTH BAY, SAMOATO MILE 5.0 & = 38 FEET
EUREKA CHANNEL, FIELDS LANDING CHANNEL & MILE 5.0 TO "N" STREET = 26 FEET

1:00 INDICATES THE NUMBER AND BEGINNING OF A LINE OF SOUNDINGS.
SOUNDINGS ARE BASED ON TIDE GAUGES REFERENCED TO U.S.C. & G.S.
Vertical and Horizontal Control:
NOAA Station: 941 8767 - North Spit, CA
Benchmark:
NO 11 1340 (PID: LV0359)
MLW Elev: 4.251m
Title:
RTK GPS, using GEOID12a and VDATUM
RTK elevations calibrated at 10.0ft nail at Coast Guard Station Humboldt Bay
Position:
RTK Positions

**Sheet
Number
1 of 2**



Federal Navigation Channel	Beacon, General	Contours
Shoaling Area	Obstruction Point	-48
Placement Area	Navigation Buoy	-47
Anchorage Area	Navigation Buoy	-46
Wreck Area	Shoalest Sounding*	-45
Submerged Wreck		-44
Zone_I_Angle_Points		

NOTES:
 DRAWINGS NOT TO BE USED AS NAVIGATION. ONLY CHANNEL CONDITION AT DATE OF SURVEY. THE LOCATION OF ALL NAVIGATION AIDS ARE BASED ON INFORMATION PROVIDED BY THE U.S. COAST GUARD. BUOY LOCATION REPRESENT THE POSITION OF THE SINKER ONLY.

SURVEYED BY THE CORPS OF ENGINEERS.

SOUNDINGS WERE TAKEN BY FATHOMETER AND ARE SHOWN TO THE NEAREST TENTHS OF A FOOT.

SOUNDINGS ARE BASED ON THE DATUM OF MEAN LOWER LOW WATER AT THE LOCALITY.

PLANE GRID AND COORDINATES ARE BASED ON THE STATE OF CALIFORNIA COORDINATE SYSTEM, LAMBERT CONFORMAL PROJECTION, ZONE 17N, CALIFORNIA, AS DESCRIBED IN SPECIAL PUBLICATION NO. 235, PUBLISHED BY THE NATIONAL OCEAN SURVEY.

PROJECT DEPTHS ARE AS FOLLOWS:
 BAR & ENTRANCE CHANNEL = 48 FEET
 NORTH BAY, SAMOATO MILE 5.0 & = 38 FEET
 EUREKA CHANNEL, FIELDS LANDING CHANNEL & MILE 5.0 TO "N" STREET = 26 FEET

1:00 INDICATES THE NUMBER AND BEGINNING OF A LINE OF SOUNDINGS.

SOUNDINGS ARE BASED ON TIDE GAUGES REFERENCED TO U.S.C. & G.S.

Vertical and Horizontal Control:
 NOAA Station: 941 8767 - North Spit, CA
 Benchmark:
 NO 11 1340 (PID: LV0359)
 MLLW Elev: 4.251m

Tides:
 RTK GPS, using GEOID12a and VDATUM
 RTK elevations calibrated at 10.0ft nail at Coast Guard Station Humboldt Bay

Position:
 RTK Positions

US Army Corps of Engineers
 San Francisco District
 450 Golden Gate Ave
 San Francisco, CA 94102

DISCLAIMER
 The United States Government furnishes this information as a public service. It is not intended to be used for any purpose other than the intended purpose. The user is responsible for the results of any application of the data for other than the intended purpose. The user is responsible for the results of any application of the data for other than the intended purpose. The user is responsible for the results of any application of the data for other than the intended purpose.

Prepared Under the Direction of JOHN D. CUNNINGHAM LT COLONEL, C.E. DISTRICT ENGINEER	Chart Date: Feb 17, 2021
Submitted: Hydro Survey Team Leader	Designed by: PDT
Recommended: Chief, Hydro Survey Section	Checked by: PDT
Approved: Chief, Construction Branch	Drawn by: PDT

HUMBOLDT COUNTY CALIFORNIA
HUMBOLDT BAY
BAR & ENTRANCE CHANNEL
CONDITION SURVEY
 29 JANUARY 2021
 7-9 FEBRUARY 2021

Sheet
Number
 2 of 2